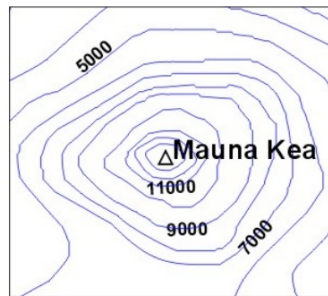
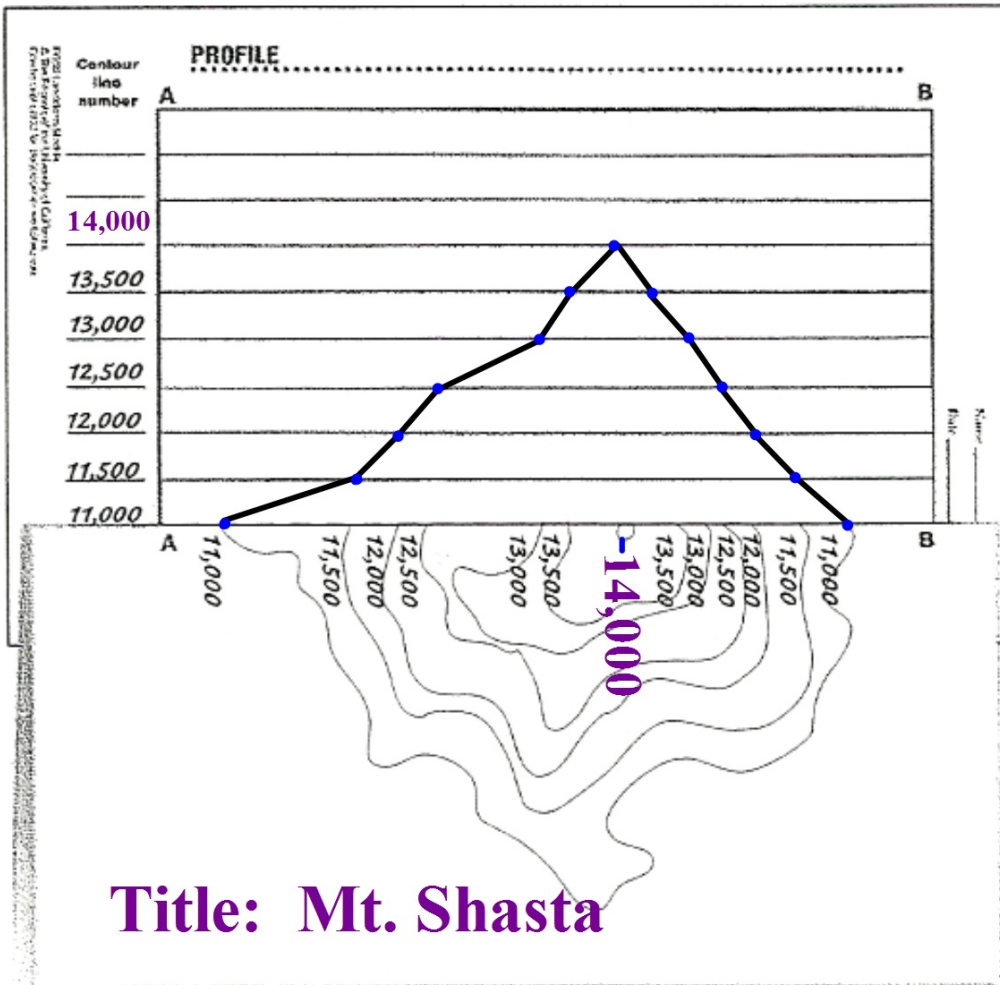


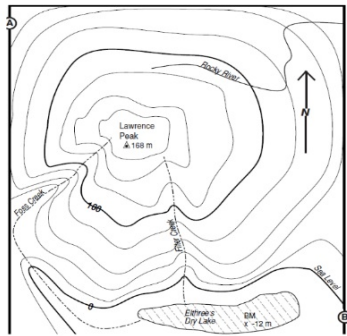
## What do contour lines tell us about landforms?



Contour lines show the shape and elevation of the land on a topographic map . Close-together contour lines mean the slope is steep. The farther the contour intervals, the more gradual the slope will be.



## What kind of information do topographic maps tell us?



Topographic maps give information about elevation and the shape of the land . A bench mark is a place where a surveyor has measured the elevation and location