

## Review Sheet Procedures:

1. Try all problems on your own.
2. Use notebook for help
3. Circle question you didn't know or got wrong.

1. List all the things that plants need to survive (there are 5).

**Space, air, water, nutrients, and light**

2. What is the function (job) of the stem?

**Holds the plant up and gets water to travel up the plant**

3. What is the function (job) of the roots?

**Takes in water and nutrients from the ground, anchors the plant**

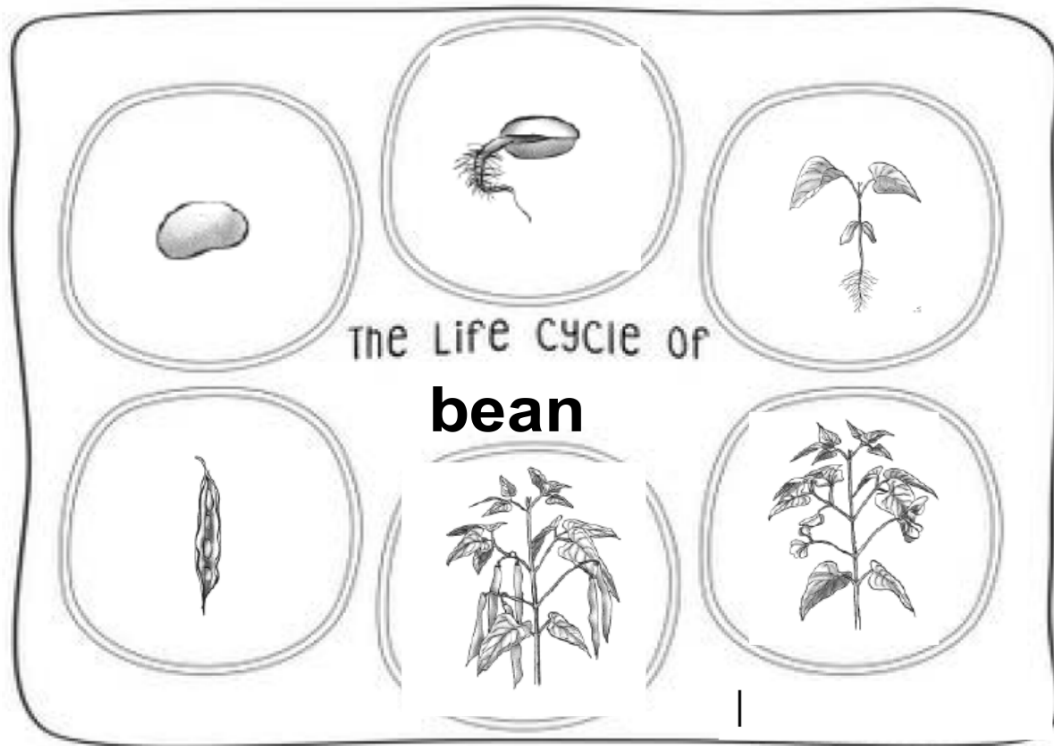
4. What is the function (job) of the leaves?

**Collects sunlight for the plant.**

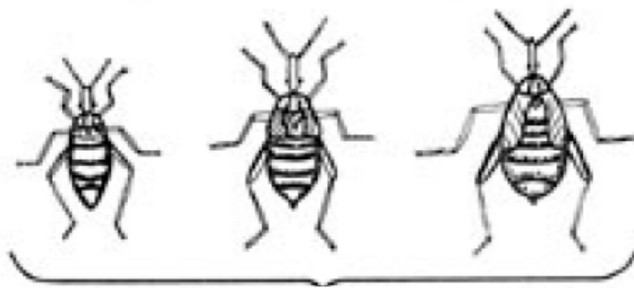
5. What is the function (job) of the flower?

**Makes the seeds**

6. Cut out and glue the life cycle of the plant in order.



7. Label the parts of the Milkweed bug life cycle: nymph, eggs, adult.



Nymph

---



Eggs

---



Adult

---

8. What are the ways we can grow a new plant? List as many as you can.

**plant seeds, make cuttings, cut potato eyes  
bulbs**

9. What is molting?

**When an insect sheds its exoskeleton**