

basalt

grey hard rock; once
the liquid lava that
came out of a volcano



scoria

reddish, bubbly rock
made from the ash from
the fires of a volcano



tuff

the light, soft rock made
from the ash of a
volcano



Investigation 1 Words

dull

a rock property- not shiny, without brightness or sheen



earth material

minerals, rocks, soil, and water- natural materials that can be found on the Earth



geologist

a scientist who studies rocks



Investigation 1 Words

granite

a very hard rock that is used in buildings and monuments



mineral

a substance that is naturally formed under the ground



property

words used to describe rocks [rough, smooth, dull, shiny]



Investigation 1 Words

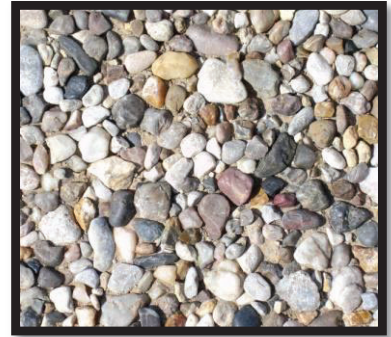
texture

how smooth or rough a rock feels to the touch



rocks

a naturally occurring group of minerals, an Earth material



river rocks

rocks found in rivers, usually smooth from the constant water rushing over them



Investigation 1 Words

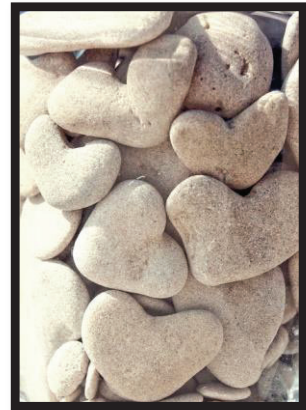
sand

what is made when
rocks are rubbed
together



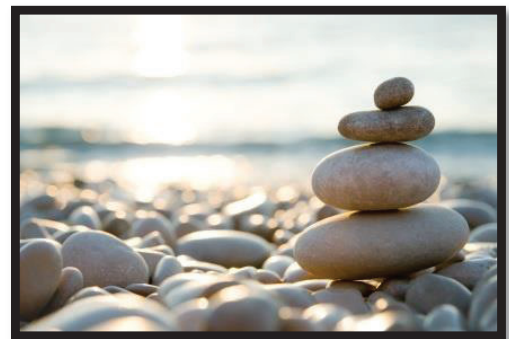
shape

circle, square, heart,
triangle, hexagon, etc.
rocks can be many shapes



size

how big or small
something is



Investigation 1 Words

weathering

when rocks break into smaller pieces because of rain, water, wind, (natural weather)



hand lens

a small magnified glass used to see small objects up close



bubble

a pocket of air that forms when a gas rises to the surface of a liquid



Investigation 1 Words

color

the pigment or hue of
an object



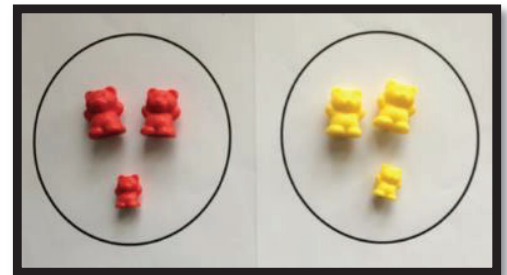
flat

level, smooth or even,
not raised



group

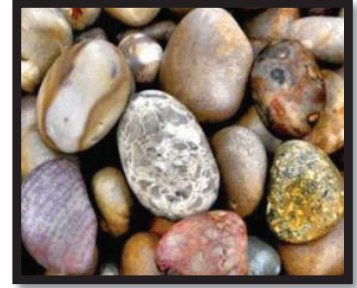
to put objects together
by similar properties



Investigation 1 Words

pattern

a property that can help identify different rocks



pointed

having sharp edges or corners



rough

bumpy, not smooth



Investigation 1 Words

round

having curved edges
like a circle



sharp

having pointed edges or
corners



shiny

bright or polished



Investigation 1 Words

smooth

flat, level, not bumpy



sort

to arrange by property



Investigation 1 Words